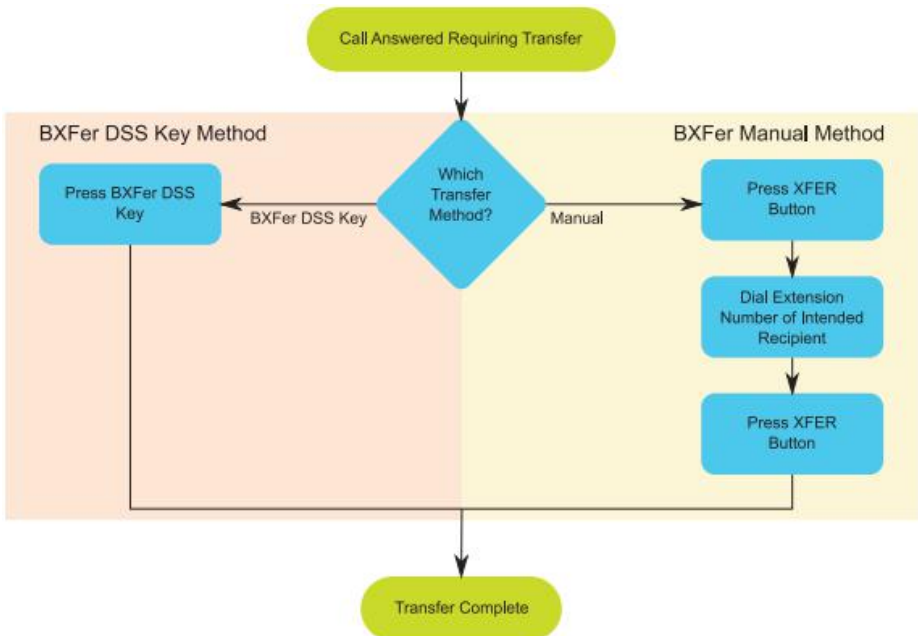


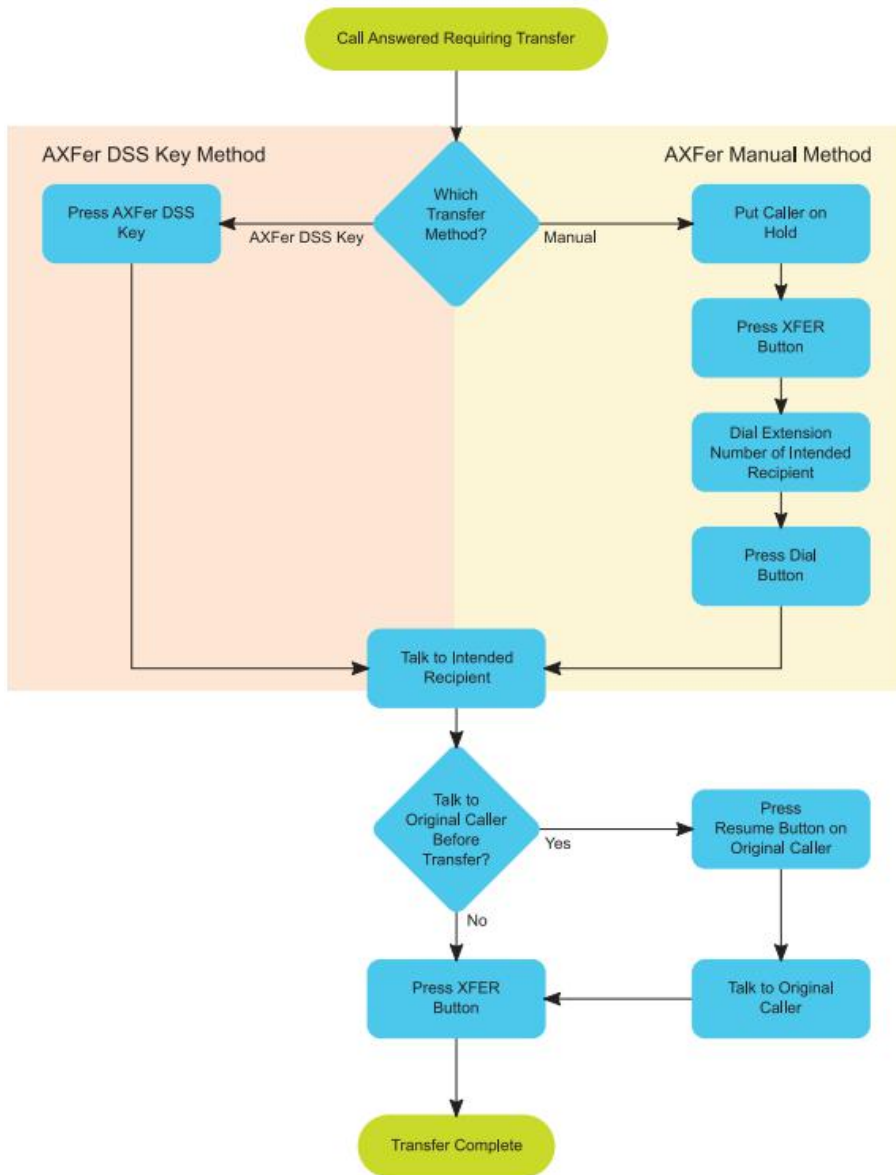
### Key

AXFer - Attended Transfer	The intended recipient is first asked if they are available to take the call.
BXFer - Blind Transfer	The call is transferred directly to the intended recipient.
Intended Recipient	Person being transferred to (transfer destination).
Original Caller	Person requiring their call be transferred.

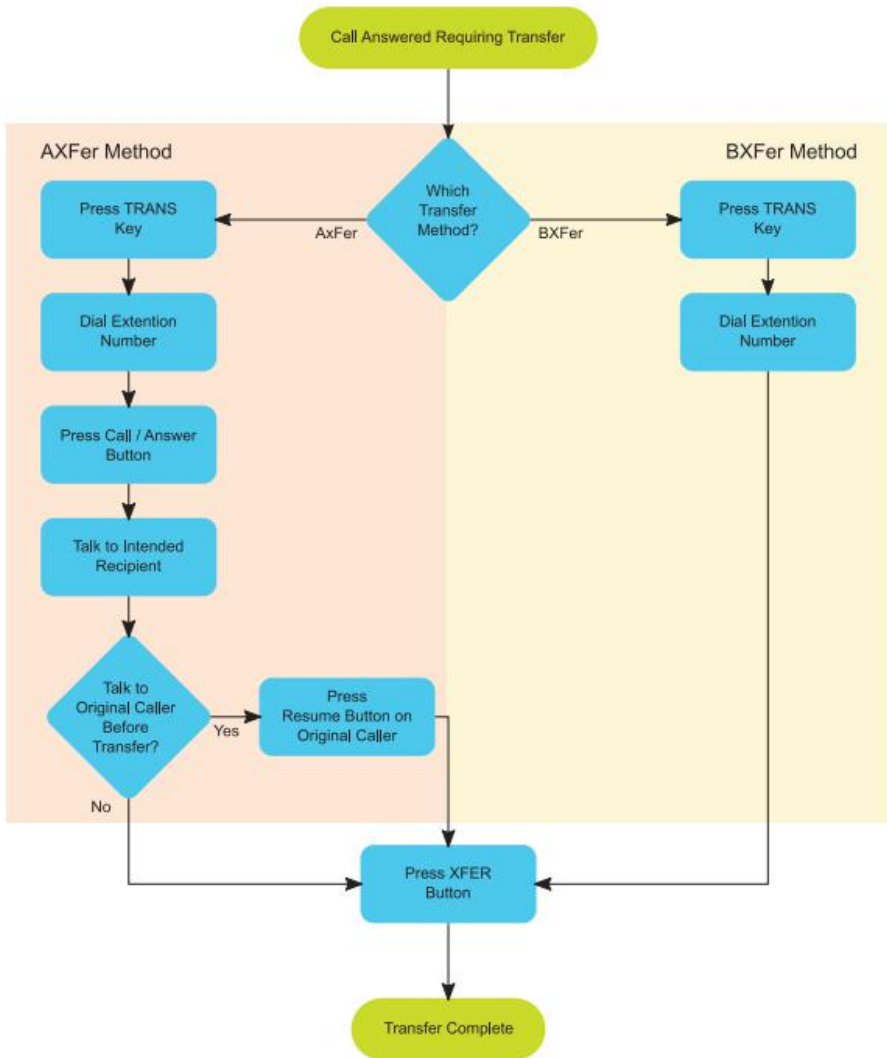
### Desk Phone Blind Transfers (BXFer)



## Desk Phone Attended Transfers (AXFer)



# Cordless Phone Transfers



## Additional Help

For more information on using your phone please visit [dialplan.co.nz](http://dialplan.co.nz)

For support with system configurations or problems please call **0800 342 575**